

124°14'E

124°16'E

124°18'E

124°20'E

124°22'E

124°24'E

LEGEND

- Municipal Boundary
- Barangay Boundary
- Rivers and Creeks
- National Road
- Provincial Road
- Municipal Road
- Barangay Road

Land Cover

- Annual Crop
- Brush/Shrubs
- Built-up
- Fishpond
- Grassland
- Inland Water
- Mangrove Forest
- Perennial Crop



Republic of the Philippines
PROVINCE OF BOHOL
City of Tagbilaran

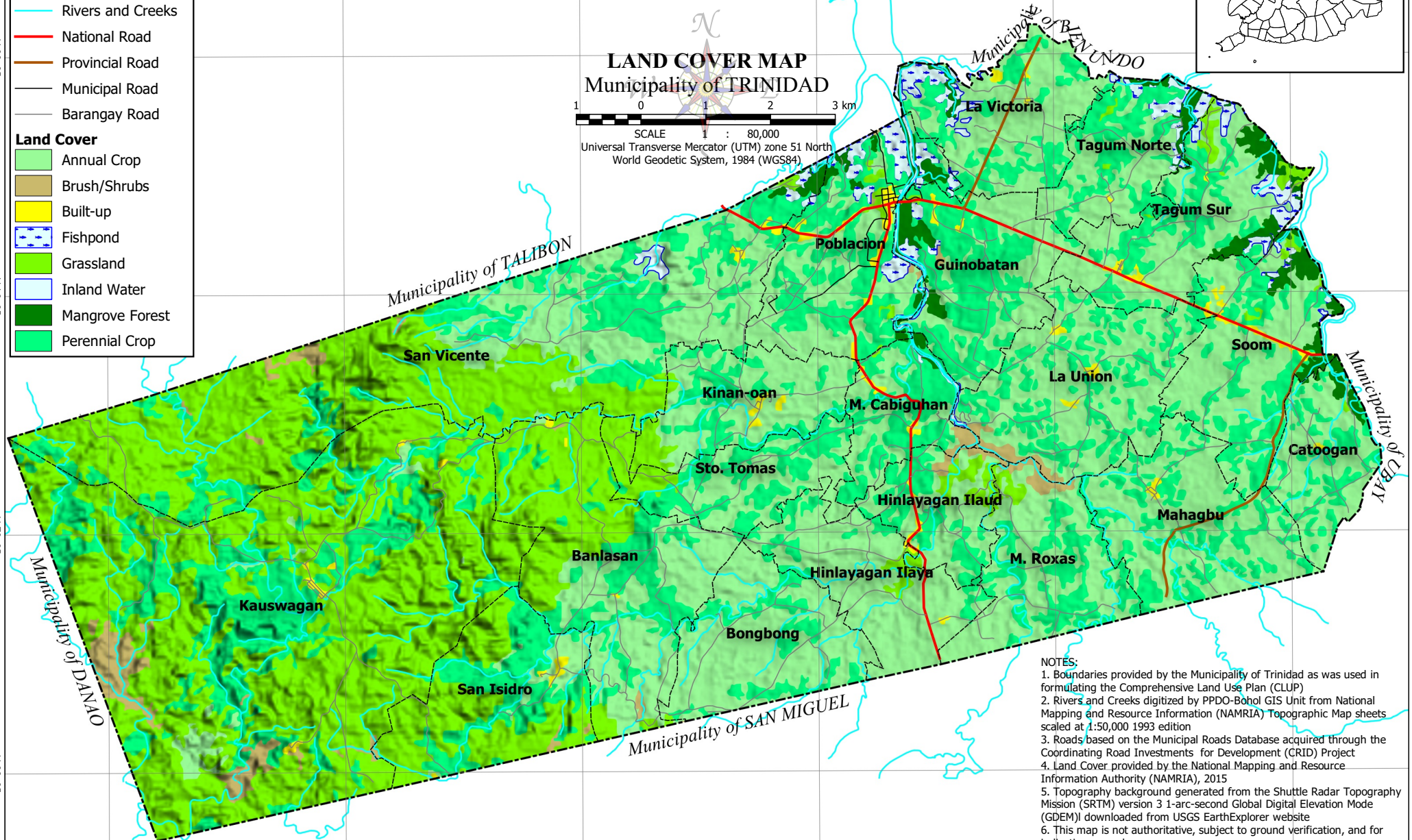
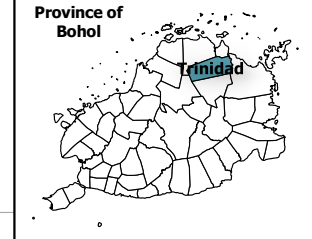


PROVINCIAL PLANNING AND DEVELOPMENT OFFICE

LAND COVER MAP Municipality of TRINIDAD



SCALE 1 : 80,000
Universal Transverse Mercator (UTM) zone 51 North
World Geodetic System, 1984 (WGS84)



- NOTES:
1. Boundaries provided by the Municipality of Trinidad as was used in formulating the Comprehensive Land Use Plan (CLUP)
 2. Rivers and Creeks digitized by PPDO-Bohol GIS Unit from National Mapping and Resource Information (NAMRIA) Topographic Map sheets scaled at 1:50,000 1993 edition
 3. Roads based on the Municipal Roads Database acquired through the Coordinating Road Investments for Development (CRID) Project
 4. Land Cover provided by the National Mapping and Resource Information Authority (NAMRIA), 2015
 5. Topography background generated from the Shuttle Radar Topography Mission (SRTM) version 3 1-arc-second Global Digital Elevation Mode (GDEM) downloaded from USGS EarthExplorer website
 6. This map is not authoritative, subject to ground verification, and for indicative use only

124°14'E

124°16'E

124°18'E

124°20'E

124°22'E

124°24'E